

Spring/Summer 2024

 **Silverts®**

**Simplified Dressing for
Empowered Living**

**Step
Into Bliss**
Footwear that Puts
Comfort First

**Universal
Solutions**

Redefining Fashion
for Easy Dressing

**Summer
Serenity**

Unwind in Simple,
Soft Sleepwear



Shop our
adaptive clothing
and footwear at
silverts.com

Love these styles?

On her:

Open-Back Embroidered Top (#811)

Easy Pull-On Pants (#41010)

On him:

Open-Back Polo Shirt (#50710)

Easy Pull-On Pants (#50790)



Get The Look:
 Top (#46020)
 Pants (#23120)
 Shoes (#15430)

Get The Look:
 Top (#816)
 Pants (#23110)
 Shoes (#15100)

Adaptive Dressing 101

New to adaptive clothing? Let us teach you about some of our adaptive features you will see throughout the catalog.

A Let's talk about Assisted Dressing

Our Assisted Dressing styles make it easier on you and your caregiver to help you get dressed, whether you're seated, standing or lying down.



O Open-Back Top

Our open-back tops, dresses and nightgowns make dressing easier for those with lowered shoulder and arm mobility. Caregivers can easily slide the sleeves up the wearers arms and secure the garment with simple shoulder snaps. This design avoids the need to lift or strain, reducing the risk of injury for both wearers and caregivers.



O Open-Back Pants

These pants are anything but basic. Designed to be put on and taken off while you're seated or lying down, the pants are pulled onto the legs and the two overlapping back panels simply wrap around the waist. All secured safely with easy-to-reach snaps.



E Easy Touch Closure

We have added easy touch closures to many of our styles to simplify dressing for you or your caregiver. By switching out tedious buttons and laces for easy touch closures, you can now adjust or fasten shoes and apparel with the touch of a hand.

S Let's talk about Self Dressing

Our Self Dressing styles offer solutions to simplify getting dressed, even if you're facing challenges such as reduced hand dexterity or upper-body mobility.



M Magnetic Closures

You'll be attracted to the ease of our magnetic closures, which are hidden away behind a faux button front. You can open and close these shirts with just a touch.



E Easy On Easy Off Side Open Pants

Our open side side pants feature openings on both sides, making it easy to slide them on, and over your hips. This design also offers easy access to hips and the abdomen, ideal for post-op or for stoma bag wearers.



R Removable Insoles

You can achieve the perfect shoe fit thanks to the removable insole and spacers found in our closed toe shoes and slippers.

Contents

6	Footwear	42	Intimates & Accessories
7	Women's	43	Women's
14	Men's	46	Men's
18	Sleepwear	47	Unisex
19	Women's	50	Specialty Categories
21	Men's	50	Recovery
24	Tops	51	Swimwear
25	Women's	52	Size Chart
30	Men's		
34	Bottoms		
36	Women's		
39	Men's		

Get The Look:
Cardigan (#517)
Shirt (#40100)

Find the products that are right for you



When you see this symbol, magnets are sewn into the featured clothing, which under some circumstances could lead to DEATH or SERIOUS INJURY and may interfere with implanted medical devices, including pacemakers. Consult a physician before wearing.

Ingestion hazard: If a magnet becomes exposed or clothing becomes worn or torn near magnet, keep out of reach of children and dispose of garments and magnets. If magnets are swallowed, seek medical attention even if the person is not choking.





Adjustable, Comfort Footwear

Say goodbye to cramped, sore feet and hello to extra-wide comfort. Experience peace of mind with our slip-resistant adjustable footwear designed for your convenience. Choose adaptive shoes and take the next step with confidence and ease.

Get The Look:
Shoes from left to right: (#15430, #55180, #15370, #55105)

Our Featured Dressing Solutions



Footwear Women's **+S** **+A**



Extra-Wide Easy Closure Slippers

Swollen, sensitive feet deserve extra TLC. Every flap on this flexible style unfolds all the way to the toes, so there's no struggle to slip these on!

- A. Lavender
- B. Cloud
- C. Dusty Rose
- D. Navy
- E. Black

6-12
Item #15100
USD \$54.98
CAD \$59.98





Terrific for Swollen Feet or Ankles

Opens up so you can easily put on & adjust the fit!



Features a removable insole!



Extra-Wide Adjustable Indoor/Outdoor Slippers

From slippers that soothe your tired toes to extra-wide, open-toed shoes that cradle your feet with soft memory foam, we've got options for everyone. And, thanks to the easy touch closures, these amazing options can custom fit to the shape of your feet, adjusting to swelling throughout the day.

Extra-Wide Adjustable Open Toe Slippers

- A. Frosted Almond
- B. Navy
- C. Black

6-12

Item #15180
USD \$49.98
CAD \$54.98

Extra-Wide Easy Closure Sandals Slippers

- D. Powder Blue
- E. Natural
- F. Black

5-12

Item #15370
USD \$49.98
CAD \$54.98



Extra-Wide Easy Closure Comfort Slippers

- G. Brushed Grey
- H. Brushed Navy
- I. Brushed Black

6-12

Item #15350
USD \$49.98
CAD \$54.98





Extra-Wide Comfort Shoes with Easy Closures for Adjustable Fit

These sporty looking sneakers feature our True Fit Insole System for a perfect fit every day. Shoes feeling too big? Add one or two spacers under the insole. Feeling too snug later? Remove a spacer or two. Customize your fit as often as you need.

- A. Multi Blue
- B. Multi Black
- C. Black
- D. Oyster Grey
- E. Black Speckle

6-12 (adjusts from B to 2E)
6-11 (available in half or full sizes)
Item #15430
USD \$89.95
CAD \$99.95



Learn About our True Fit Shoes!

We have designed our sneaker soled shoes with a removable insole and two foam spacers so you can customize your shoe fit. Too snug? Remove a spacer or two. Too loose? Stack a spacer or two under the insole. Use orthotics? Take everything out and slip in your orthotic.



Extra-Wide Slip-Ons

No laces? No problems. You can slip on these comfortable shoes and sneakers with ease with the easy grip loop and smooth sock lining. Plus, you can easily customize them to fit the shape of your feet thanks to the Silverts signature True Fit Insole System, which lets you easily adjust to accommodate extra wide or swollen feet!

Extra-Wide Comfortable Slip-On Sneakers Without Laces

- F. Black
- G. White
- H. Navy

6-12 (adjusts from B to 2E)
6-11 (available in half or full sizes)
Item #15440
USD \$89.95
CAD \$99.95



Wide-Width Supportive Slip-On Shoes

- I. Light Gray
- J. Pink
- K. Black

6-12 (adjusts from B to 2E)
6-11 (available in half or full sizes)
Item #15410
USD \$89.95
CAD \$99.95





Extra-Wide Comfort Shoes with Sherpa Lining

Stay toasty in faux-shearling-lined, suede casual shoes. With two removable spacers that fit under the one insole, you can accommodate changes in foot size due to swelling or orthotics. Easy and oh-so comfy!

- A. Pink Leather 6-12 (adjusts from B to 2E)
 - B. Navy Suede 6-11 (available in half or full sizes)
 - C. Black Suede
- Item #15400**
USD \$99.95
CAD \$109.95



Extra-Wide Comfort Step Shoes

Sporty and supportive with extra-wide, extra-deep openings and adjustable easy-touch closures, these shoes are every day perfect. They offer removable insoles, slip-resistant soles and a special fluid barrier to protect from spills and smells. They're even machine-washable!

Extra-Wide Comfort Steps Shoes

- D. Black
- 6-12
Item #10500
USD \$74.98
CAD \$79.98

Extra-Wide Stretch Comfort Shoes

- E. Beige
 - F. Black
- 6-12
Item #10240
USD \$65.08
CAD \$69.98



Extra-Wide Mary Jane Walking Shoes with Easy Touch

These Mary Janes hug feet for a smooth supportive fit. Our True Fit Insole System lets you customize sizing as often as needed. Add a spacer or two for a snug fit, or remove them for more space.

- G. Navy
 - H. Black
 - I. Oatmeal
- 6-12 (adjusts from B to 2E)
6-11 (available in half or full sizes)
Item #15420
USD \$79.95
CAD \$89.95



Shop Smarter

How to find the perfect fit:

Finding shoes that fit just right is essential for comfort and foot health. Here's a brief guide to help you measure your feet accurately:

1. Foot Length

Measure from the heel to the big toe, adding 1/4 inch to your measurement for wiggle room.

2. Foot Width

Measure the width of the widest part of your foot to ensure the right fit for your foot shape.

3. Circumference Check

Measure around the widest part of your foot with string and compare to a ruler for an accurate circumference reading.

4. Consult the Size Chart

Compare your measurements to the size charts on page 52 & 53.

Happy shoe shopping!



Features a removable insole!



Extra-Wide Open Toe Slipper

We took our rave reviewed women's sandal slippers and made a men's version. The large overlap completely opens up so you can easily put them on and adjust the fit for swelling throughout the day. The open toe design is great for hot feet, bunions and hammertoes which are often cramped in closed toe shoes.

- G. Black
- H. Heather Gray

7-14
Item #55180
 USD \$54.98
 CAD \$59.98

New Style!



Extra Wide Easy Close Slippers

These comfy slippers are simply the best! Think extra-wide fit, adjustable hook and loop fasteners and Silverts Easy Touch closures—they're just so easy to slip on and get going! Plus, memory foam insoles and no-slip soles offer the ultimate comfort and safety.

Soft Wide Adjustable Slippers

- A. Navy Buffalo Plaid
- B. Red Buffalo Plaid

7-14
Item #55130
 USD \$49.98
 CAD \$54.98

Extra Extra-Wide Slipper

- C. Camo
- D. Steel
- E. Black
- F. Navy

7-14
Item #55105
 USD \$54.98
 CAD \$59.98



Easy Wear Extra-Wide Comfortable Walking Shoes

We designed these classic leather shoes with easy grip loops and easy touch closures, so you can get out the door sooner. They're also wider than they look, with removable spacers to accommodate orthotics or foot swelling.

- A. Navy
- B. Black
- C. Chestnut
- D. Graphite

7-14 (adjusts from D to 4E)
7-11 (available in half or full sizes)
12-14 (full sizes only)

Item #55410
USD \$99.95
CAD \$109.95



Extra-Wide Comfort Shoes with Easy Touch Closures

You asked, we listened. Here's a shoe that's even easier to step in and out of. The top opens with an extra-large flap, with an easy touch closure that's friendly to tired or achy fingers.

- E. Olive
- F. Black
- G. Multi Black

7-14 (adjusts from D to 4E)
7-11 (available in half or full sizes)
12-14 (full sizes only)

Item #55430
USD \$89.95
CAD \$99.95



Extra-Wide Comfortable Slip-On Sneakers Without Laces

Sporty athleisure styling elevates this sneaker beyond the everyday. The breathable mesh upper keeps your feet cool and comfortable, making this the perfect shoe for the power walk circuit or your next vacation cruise.

- H. Grey
- I. Black

7-14 (adjusts from D to 4E)
7-11 (available in half or full sizes)
12-14 (full sizes only)

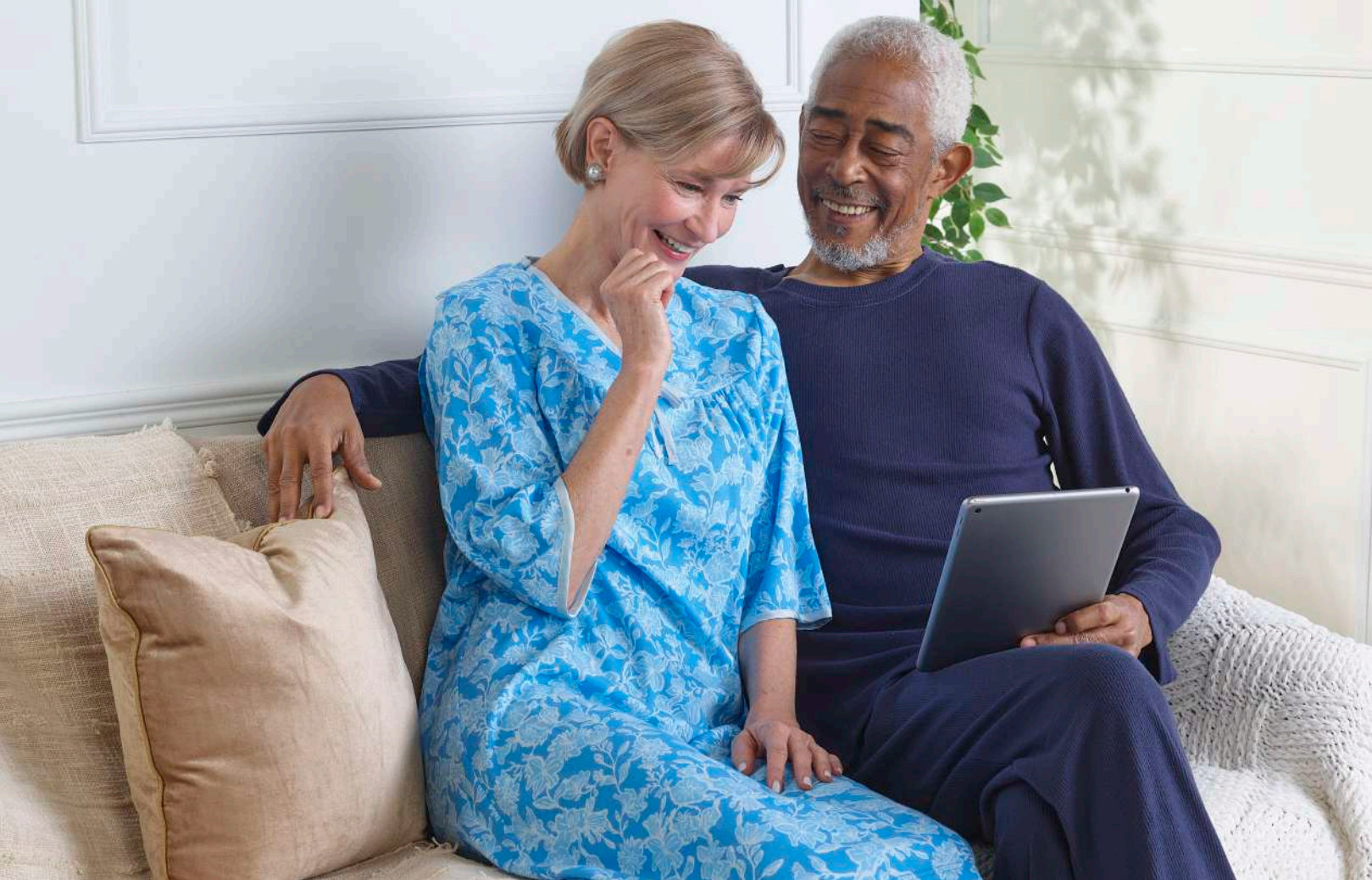
Item #55440
USD \$89.95
CAD \$99.95

A removable insole and spacer let you customize for the perfect fit.

Grip loops make pulling on a breeze!

Featuring a lightweight, no-slip cushioned sole.





Soft, Simple Sleepwear

Elevate your evening or recovery routine with adaptive nightgowns and pajamas. With functional features like privacy-ensuring back panels, easy-to-pull loops and closures that avoid pressure points, our innovative sleepwear will help you dress and undress with ease.

Our Featured Dressing Solutions



Open Back Closure



Easy Grip Pull-On Loops

Get The Look:

On her: nightgown (#26000)
On him: PJ set (#704)

Sleepwear **+S +A**
Women's



Our Classic Open-Back Nightgowns

These super-cozy open-back nightgowns are easily secured with a snap closure at each shoulder, and feature a discreet and generous back overlap for additional coverage. Designed for comfort—in plenty of print options for her—these are our bestsellers for a reason!



Open Back Pocket Nightgown

- A. Millie Floral
- B. Green Bloom
- C. Bloom
- D. Purple Bloom

S-3XL

Item #318
USD \$39.98
CAD \$44.98

Open-Back Knit Nightgown

- E. Hand Drawn Floral
- F. Springtime Serenade
- G. Lilac Skin
- H. Cat Bows

S-3XL

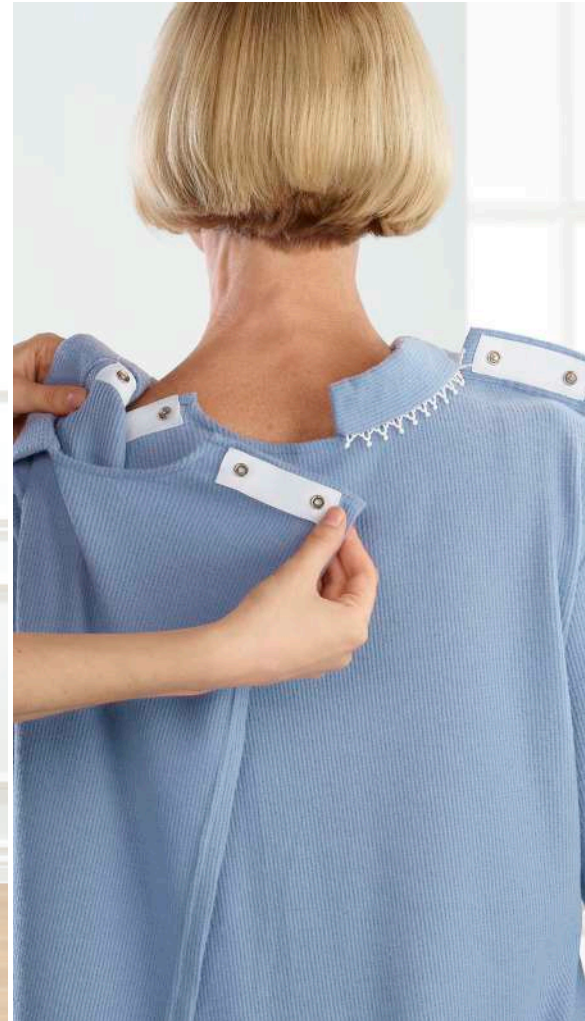
Item #26000
USD \$39.98
CAD \$44.98

Open Back Lace Trim Nightgown

- I. Tropical Birds
- J. Blue Jaguar
- K. Starburst
- L. Butterfly Dragonfly

S-3XL

Item #26280
USD \$39.98
CAD \$44.98



Open-Back Top & Pull-On Pant Pajama Set

Our soft and breathable waffle knit pajama set is just the thing for lounging over breakfast. Best of all, the top features an open back closure, while the pants have easy grip loops, making it ideal for getting dressed with lowered arm and hand mobility!

Also shown:
Slip On
Shoes
(#15410)

Bed Jackets

This is what a hug feels like. Made from a plush fleece fabric with no sleeves, it gently drapes the shoulders and adds a layer of fuss-free warmth.

- D. Mellow Mauve
- E. Navy
- F. Tranquil Sage
- G. Caribbean Blue

One Size
Item #30290
USD \$49.98
CAD \$54.98



Also shown:
Sneaker
(#55440)

Women's Open-Back Top & Pull-On Pant Pajama Set

- A. Dusty Pink
- B. Steel Blue
- C. Navy

S-3XL
Item #703
USD \$69.98
CAD \$74.98

Men's Open-Back Top & Pull-On Pant Pajama Set

- H. Steel Blue
- I. Navy
- J. Pewter

S-3XL
Item #704
USD \$69.98
CAD \$74.98



A

Also shown:
Slippers
(#55130)



Our Classic Open-Back Nightgowns

These super-cozy open-back nightgowns are easily secured with a snap closure at each shoulder, and feature a discreet and generous back overlap for additional coverage. Designed for comfort—in plenty of print options for him—these are our bestsellers for a reason!

Open Back Henley Nightgown

- A. Heather Indigo
- B. Ciel Blue Plaid

S-3XL

Item #336

USD \$49.98

CAD \$54.98

Open-Back Poly-Cotton Nightgown

- C. Argyle
- D. Red Tartan
- E. Chevron

S-3XL

Item #50050

USD \$44.98

CAD \$49.98

Open-Back Flannel Nightgown

- F. Digital Dot
- G. Buffalo Plaid

S-3XL

Item #50120

USD \$39.98

CAD \$44.98



Stretch Knit

Cozy Flannel

Crisp Poplin

Our Fabrics			
Which is right for you?	<p>Stretch Knit Our poly-cotton blend brings the soft, stretchy feel of your favorite t-shirt.</p>	<p>Flannel Made from 100% cotton, our flannel is breathable, durable and gets softer with each wash.</p>	<p>Poplin Smooth, and crisp like a fresh set of sheets, this 97% cotton fabric is great for staying fresh during warmer temperatures.</p>



Get The Look:
Top (#24700)



Essential Tops & Dresses

Discover summer outfits that will make dressing a breeze! You don't need to compromise on style or comfort when you choose our stylish open-back or magnetic designs. We have what you need to simplify your daily dressing routine. Designed with high quality, breathable fabrics, our tops withstand the test of time and comfort.

Our Featured Dressing Solutions



Open Back Closure



Easy Magnetic Closures



Open-Back Collared Dress

Our open-back dresses seamlessly blend style and function, offering a chic look while ensuring comfort. The discrete and generous back overlap provides additional coverage, while the snap closures at each shoulder are easy for caregivers.

- A. Floral Geo
- B. Polka Dot Roses
- C. Lakeside Floral

S-3XL

Item #316

USD \$54.98

CAD \$59.98

Also shown:

Shoes (#15420)





Open-Back Tops

Our open-back tops make dressing simple, whether you're seated, standing or laying down. Available in a variety of styles—from basic tees to 3/4 sleeve soft tops—all are designed for ease, privacy and comfort.



Breathable,
Poly-Cotton

Buttery Soft
Poly-Spandex



Also shown:
Capris (#033)
Shoes (#15420)

Open-Back Basic Tee

- A. Teal Blue
- B. Ciel Blue
- C. White

S-3XL

Item #24830

USD \$24.98

CAD \$29.98

Open-Back 3/4 Sleeve Top

- D. Mellow Mauve
- E. Menthol Green
- F. Pale Canteloupe
- G. Ciel Blue

S-3XL

Item #24700

USD \$29.98

CAD \$34.98

Open-Back Classic Top

- H. Heather Gray
- I. Royal Purple
- J. Breezy Blue

S-3XL

Item #139

USD \$29.98

CAD \$34.98

Open-Back Embroidered Top

- K. Eggplant
- L. Royal
- M. Extreme Pink

S-3XL

Item #24710

USD \$24.98

CAD \$29.98



Hidden magnetic buttons!



Magnetic Tops

Forget fumbling with cumbersome closures! We've made it simple to look sharp for any occasion with magnetic buttons and zips that make dressing easy!

Magnetic Zipper Hoodie

- A. Black
- B. Royal
- C. Heather Gray

S-3XL
Item #40020
USD \$54.98
CAD \$59.98

Magnetic Closure Top

- D. Navy
- E. Ciel Blue
- F. White

S-3XL
Item #46020
USD \$69.98
CAD \$74.98



Duster House Dresses

Dare to wear a print in this soft-to-the-touch dress, which has room to breathe, move and relax in—plus large side seam pockets to store all your on-the-go necessities.

- G. Periwinkle
- H. Navy Floral
- I. Baroque Paisley

One Size
Item #22040
USD \$49.98
CAD \$54.98



Also shown:
Shoes
(#15420)

Bloom with Style

Shop the Spring Floral Trend



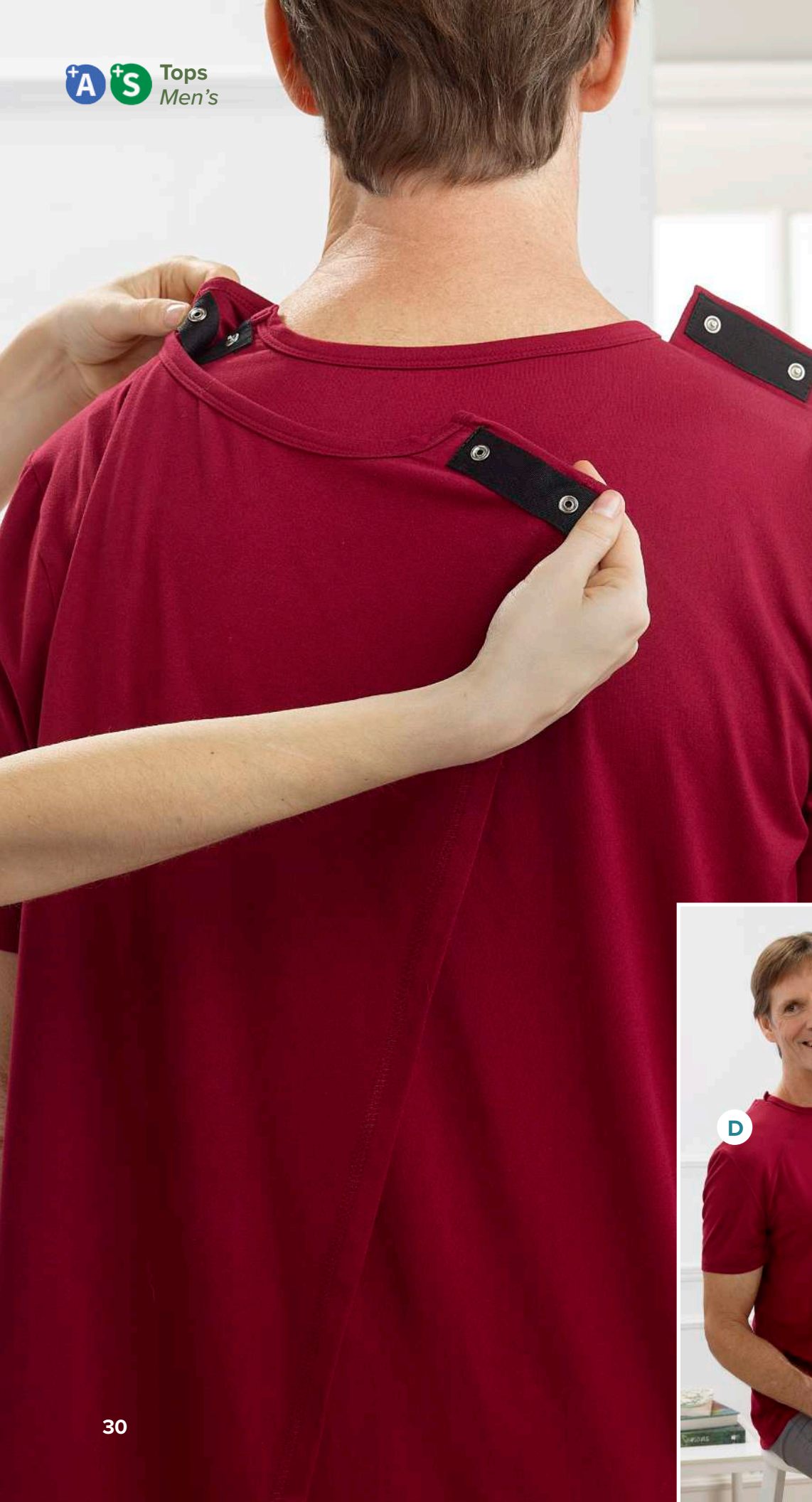
Open-Back Faux Button Top
Leafy Floral
S-3XL
Item #143
USD \$34.98
CAD \$39.98



Open-Back Ruffle Hem Nightgown
Blue Flower
S-3XL
Item #342
USD \$39.98
CAD \$44.98



Open-Back Embroidered Flower Top
Teal
S-3XL
Item #811
USD \$39.98
CAD \$44.98



Open-Back Shirts

We have plenty of open-back options for him, all featuring a discrete and generous back overlap for additional coverage with snap closures at each shoulder. Available in a comfortable poly-cotton mix, there are plenty of styles to choose from!



Also shown:
Pants
(#41130)

D



Colors also available in long-sleeve

Colors also available in short-sleeve

Open-Back Active T-Shirt

- A. Navy
- B. Electric Blue
- C. Heather Grey
- D. Wine

S-3XL
Item #175
USD \$29.98
CAD \$34.98

Open-Back Colorblock T-Shirt

- E. Navy Heather
- F. Black Heather

S-3XL
Item #813
USD \$34.98
CAD \$39.98

Open-Back Short Sleeve Polo

- G. Black
- H. Wine
- I. Heather Gray

S-3XL
Item #50710
USD \$34.98
CAD \$39.98

Open-Back Long-Sleeve Polo

- J. Dark Navy
- K. Ciel Blue

S-3XL
Item #50780
USD \$39.98
CAD \$44.98



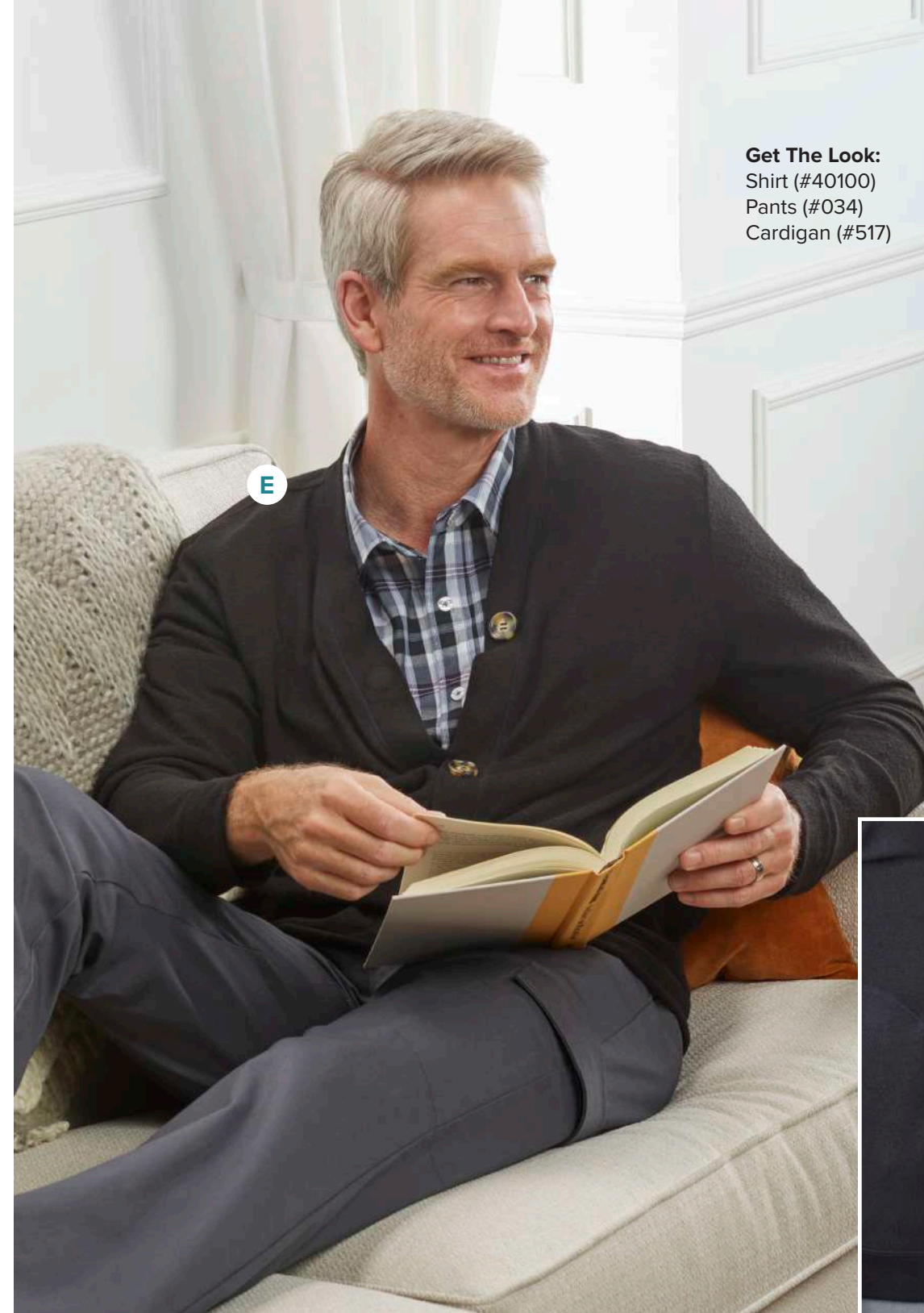
Handsome. Easy.

Frees us from frustration of decreased fine motor dexterity needed for buttoning a shirt. Washes great. Looks great! I bought two more in two other colors.

-Rachel P.



Feathery soft for sensitive skin



Get The Look:
Shirt (#40100)
Pants (#034)
Cardigan (#517)



Magnetic Zippers and Buttons

Forget fumbling with cumbersome closures! We've made it simple to look sharp for any occasion, with magnetic buttons and zips that make dressing easy!



Magnetic Button Short Sleeve Shirt

A. Delton Plaid
B. White
S-3XL
Item #40100
USD \$69.98
CAD \$74.98

Magnetic Closure Sport Shirt

C. White
D. Shadow Plaid
S-3XL
Item #40000
USD \$69.98
CAD \$74.98

Magnetic Cardigan

E. Black
F. Navy Heather
S-3XL
Item #517
USD \$49.98
CAD \$54.98





Effortless Trousers


Putting on pants shouldn't be a hassle, whether you're standing, seated or laying. We believe in clothing that adapts to your needs without sacrificing style or comfort. With strategically placed closures, adjustable waistbands, and easy-to-use fasteners, our pants seamlessly allow for effortless dressing.


Get The Look:
 Top (#813)
 Pants (#50940)
 Shoes (#55105)


Our Featured Dressing Solutions

- 

Open-Back Pants
- 

Easy Grip Pull-Up Pant Loops
- 

Easy On and Easy Off Side Open Pants
- 

Easy Touch Closure
- 

Adjustable Hems

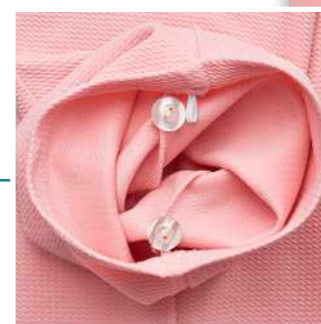


Adaptive Pant Solutions

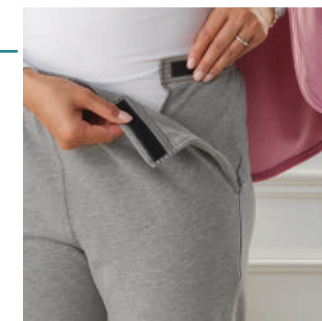
Revolutionize your wardrobe with the power of adaptive apparel. Our catalog features 3 game-changing pants designed for effortless dressing. No more struggles pulling them up, sliding over hips, or fastening – we've got the solution.



Pull-On pants have discreet grip loops, ideal for lowered hand dexterity.
 Pants (#063)



Adjustable hems feature a button and loop on each inner side of the pant leg to shorten the length by 2 inches.
 Pants (#063)



Open Side pants are easier to pull over hips, and offer easy access to the abdomen, including stoma bags.
 Pants (#24000)



Open Back pants facilitate dressing from a seated or laying position, removing the necessity for caregivers to lift the wearer.
 Pants (#23080)





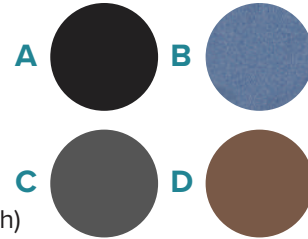
Open-Back Pants

It's all about the convenience! Open-back pants can be put on or taken off while you're seated or even lying down. Plus, two back panels with easy snap closures offer full coverage and privacy.



Open-Back Gabardine Pant

- A. Black
- B. Heather Chambray Blue
- C. Pewter
- D. Coffee



S-3XL

Item #23080 (Regular Length)

Item #23080P (Petite Length)

USD \$39.98

CAD \$44.98

Also shown:

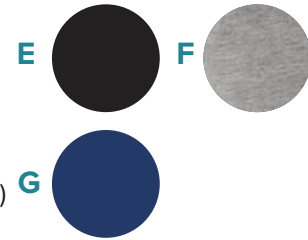
Shawl (#500)

Shoes (#15350)



Open-Back Fleece Pant

- E. Black
- F. Heather Gray
- G. Navy



S-3XL

Item #25050 (Regular Length)

Item #25050P (Petite Length)

USD \$39.98

CAD \$44.98

Also shown:

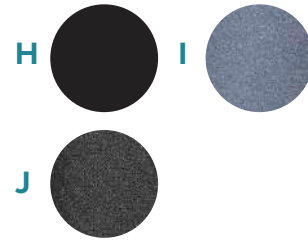
Top (#812)

Slippers (#15180)



Open-Back Active Capri

- H. Black
- I. Dark Heather Blue
- J. Dark Heather Gray



S-3XL

Item #033

USD \$44.98

CAD \$49.98

Also shown:

Top (#143)

Shoes (#15420)



Easy Touch Side Closure Pants

There are no unruly buttons or zippers at this waistband. Instead, side closures secure with a light touch. To make these pants even more comfortable, we've designed them in a soft fleece you'll obsess over.

K. Royal

L. Black

M. Heather Gray

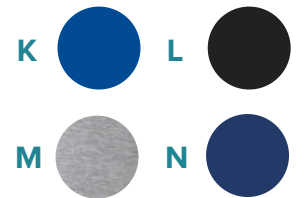
N. Navy

S-3XL

Item #24000

USD \$39.98

CAD \$44.98



Also shown:

Cape

(#30290)

Slippers

(#15100)





Pull-On Pants

Pull on these lightweight, stretchy pants with ease. The grip loops found inside the waistband are great for people with lowered hand dexterity, and can be discreetly tucked away when not in use.

- A. Black
 - B. Navy
 - C. Pink
- S-3XL
Item #063
USD \$44.98
CAD \$49.98



Wrap Skirt

Secure your skirt with a touch of the hand thanks to our easy-touch closures. This stylish and secure option eliminates the need for stepping into traditional skirts, combining both fashion and practicality.

- D. Black
 - E. Navy
 - F. Heather Chambray Blue
- S-3XL
Item #23010
USD \$39.98
CAD \$44.98



Also shown:
Top (#46020)
Shoes (#15420)



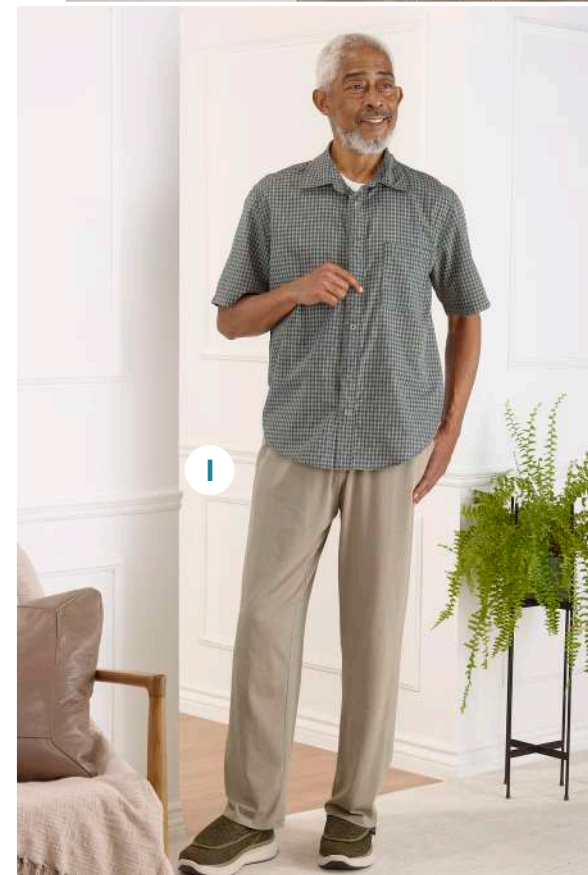
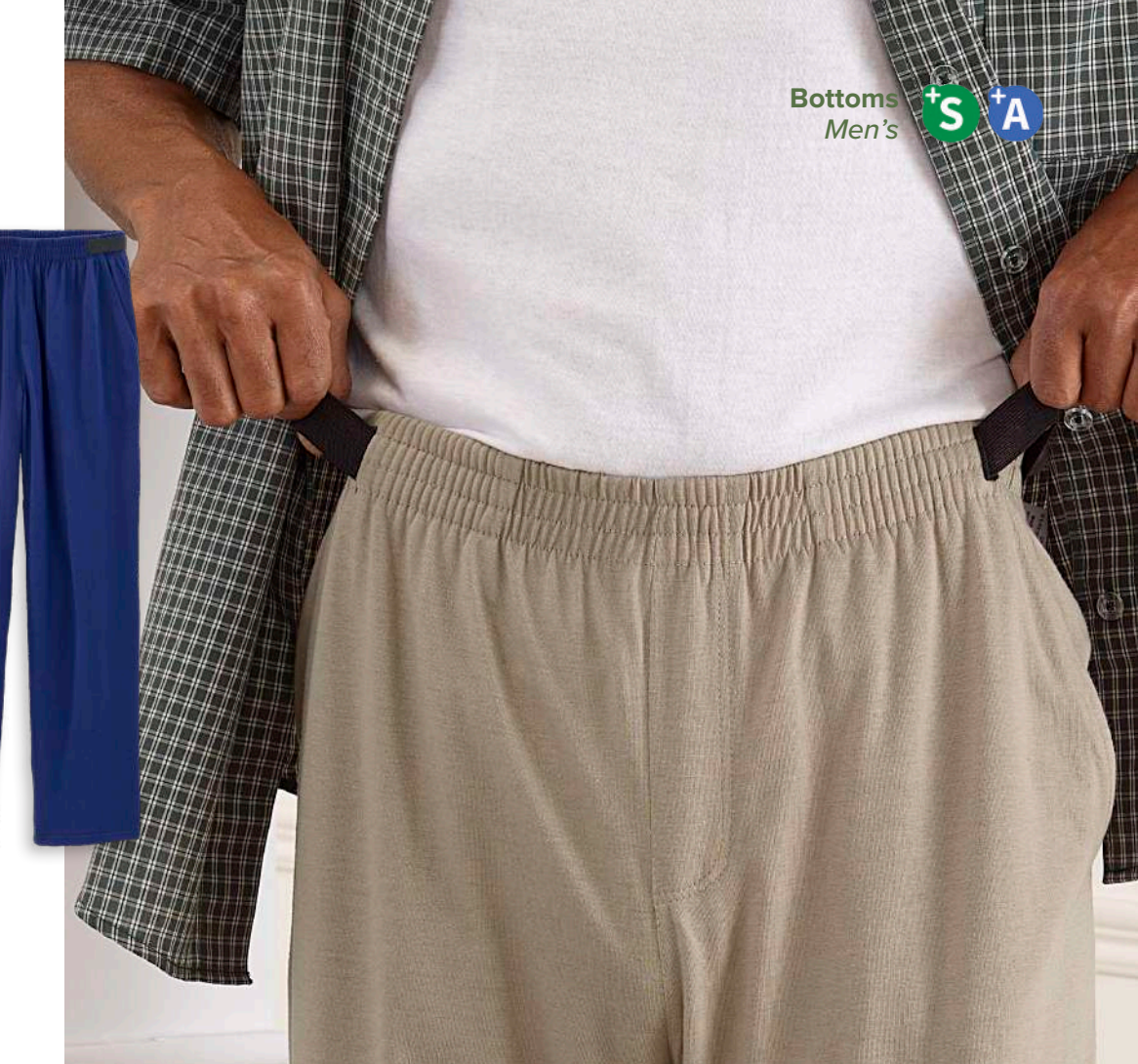
Pull-On Pants

Pull on these lightweight, stretchy pants with ease. The grip loops found inside the waistband are great for people with limited hand dexterity, and can be discreetly tucked away when not in use.

- G. Black
- H. Indigo
- I. Khaki

S-3XL
Item #065
USD \$44.98
CAD \$49.98

Also shown:
Top (#40100)
Shoes (#55430)





Also shown:
Top (#188)
Pants (#50220)
Shoes (#55105)



Open-Back Pants

It's all about convenience! Open-back pants can be put on or taken off while you're seated or even lying down. Plus, two back panels with easy snap closures offer full coverage and privacy. Check out our options ranging from cargo shorts to fleece sweatpants on the next page.



Open-Back Cargo Shorts S-3XL
A. Black **Item #036**
B. Olive USD \$44.98
CAD \$49.98



Open-Back Garbadine Pant S-3XL
C. Black **Item #50220**
D. Coffee USD \$44.98
E. Heather Chambray Blue CAD \$49.98



Open Back Fleece Pant S-3XL
F. Black **Item #50940**
G. Navy USD \$44.98
H. Heather Gray CAD \$49.98



Also shown:
Cardigan (#517)
Shoes (#55410)



Open Side Fleece Pants

When you're living with Parkinson's or arthritis or recovering from a stroke, get dressed confidently—and by yourself—with the slip-on comfort of a front panel that folds down and an *easy touch* strip that securely fastens in place.

I. Navy
J. Heather Gray
K. Black



S-3XL
Item #50630
USD 44.98
CAD 49.98



Get The Look:
 Top (#815)
 Pants (#072)
 Shoes (#15180)



Intimates & Accessories

Our adaptive intimates and accessories are made from ultra-soft, buttery-smooth fabrics. Say goodbye to scratchy materials and uncomfortable seams. Whether you're dressing yourself or assisting a loved one, our adaptive pieces are designed to make life a little easier and a lot more comfortable.

Our Featured Dressing Solutions



Supportive Breast Nests

Breast Nests are a fan favorite for a reason. Their unique design features a supportive panel of fabric between the breasts and the torso to help reduce skin irritation and rashes. Meanwhile, wide straps and a buttery soft, sweat wicking fabric ensures you stay comfortable all day long.

Breast Nest Camisoles

- A. Black
- B. Toasted Beige
- C. Caramel
- D. White

S-3XL

Item #18910

USD \$39.98

CAD \$44.98

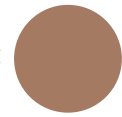
A



B



C



D



Breast Nest Bras

- E. Black
- F. Toasted Beige
- G. Caramel
- H. White

S-3XL

Item #18920

USD \$34.98

CAD \$39.98

E



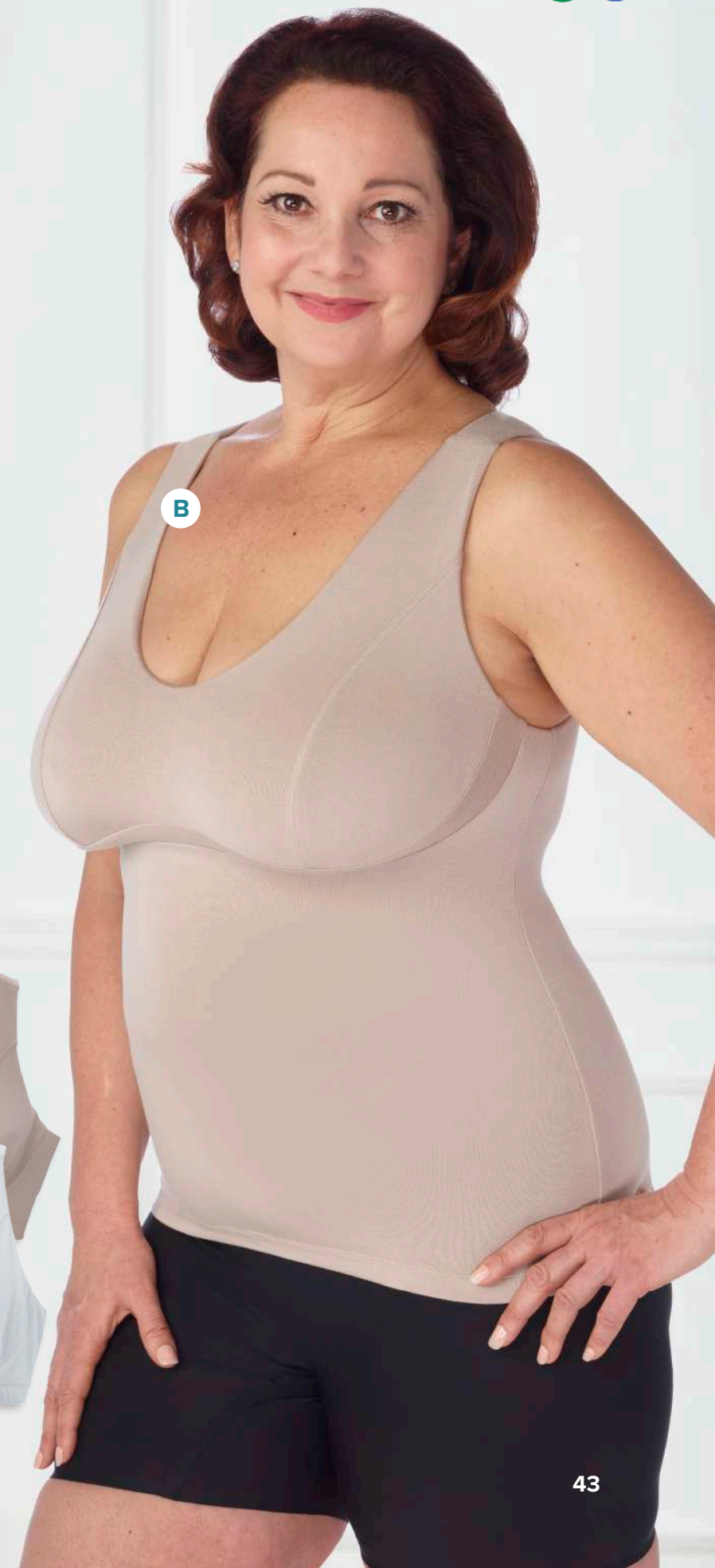
F



G



H





A

S

Easy On Easy Touch Front Closure Bra

Whether you're living with arthritis, diabetes, multiple sclerosis, fibromyalgia or limited upper arm mobility, you can get dressed without struggling, thanks to a hassle-free closure and clasps made for not-so-nimble fingers.

A. Black
B. White

S-2XL
Item #407
USD \$24.98
CAD \$29.98



B



S

Snap-Front Bra

With oh-so-easy fasteners, this bra snaps shut in seconds, making it an essential if you have arthritic hands or lowered hand dexterity.

C. Black
D. White

S-2XL
Item #18480
USD \$24.98
CAD \$29.98



C



D

A

Open-Back Undervest 3-Pack

Our poly-cotton tank adds a breathable layer of comfort without any fuss, thanks to the open back design. An everyday basic—stock up with a 3-pack.

E. White

S-3XL
Item #28040
USD \$39.98
CAD \$44.98



E

S

Cotton Briefs 3-Pack

Our 100% cotton, latex free, high-waist briefs consistently earn online raves from Silverts shoppers. That's because they're affordable and fuss-free, with a banded leg for exceptional fit and comfort.

F. White

S-3XL
Item #18040
USD \$19.98
CAD \$24.98

F



Open-Back Undervest 3-Pack

This wrinkle-resistant poly-cotton layer is ideal for wearing underneath your favorite shirt, sweater or jacket. With its open back entry, simply slide your arms in, instead of wiggling or raising them into the air.

White

S-3XL

Item #28045

USD \$39.98

CAD \$44.98



Also available for women!
Search for style 409 at silverts.com



Open-Front Underwear 3-Pack

Mornings and evenings just got easier for you and your caregiver with our full-length easy touch closures. With a light touch, you'll feel secure, plus a discreet absorbent layer will keep you dry when you need it.

Heather Gray

S-3XL

Item #410

USD \$54.98

CAD \$59.98



Slip-Resistant Socks

Stock up on our must-have socks that are fit to wear at home, at the hospital or at a nursing home.

- A. Salmon
- B. Light Green
- C. Baby Pink
- D. Beige
- E. Rose Pink
- F. Lavender
- G. Blue
- H. Navy
- I. Gray
- J. Black

Item #19140

S/M & L/XL

USD \$6.98

CAD \$7.98



Slip-Resistant Socks 6-Pack

Walk steady on tiles and hardwood floors in these cushy chenille socks with a gripper sole. Also outfitted with plenty of stretch and a seamless toe, you'll bring sweet relief to sensitive feet.

- K. Pastel Pack
- L. Novelty Pack
- M. Unisex Pack

Item #19150

S/M & L/XL

USD \$29.98

CAD \$34.98



*Prices include 6 pairs of socks per pack



S
Terry Shower Bath Cape

With an attached cozy hood to keep your head warm, this shower cape slips on and off with ease for bathing.

- A. Caribbean Blue
- B. Navy
- C. White

One Size
Item #30200
USD \$39.98
CAD \$44.98

Ultra-Soft Stay-On Wheelchair Blankets

This lightweight blanket is thoughtfully designed with loops that snap securely onto any wheelchair, an oversized patch pocket, soft and durable fleece fabric, and two colors to choose from.

- D. Eggplant/Black
- E. Royal/Black

One Size
Item #30210
USD \$29.98
CAD \$34.98



Perfect for my 94 year old mother

She is a resident in a nursing home and spends the majority of her day in a wheelchair. I like the tabs that keep it in place and the large pocket makes it convenient to place personal items. It is very thick and warm making it excellent for cooler weather. Most likely it will be too warm in the warm weather.

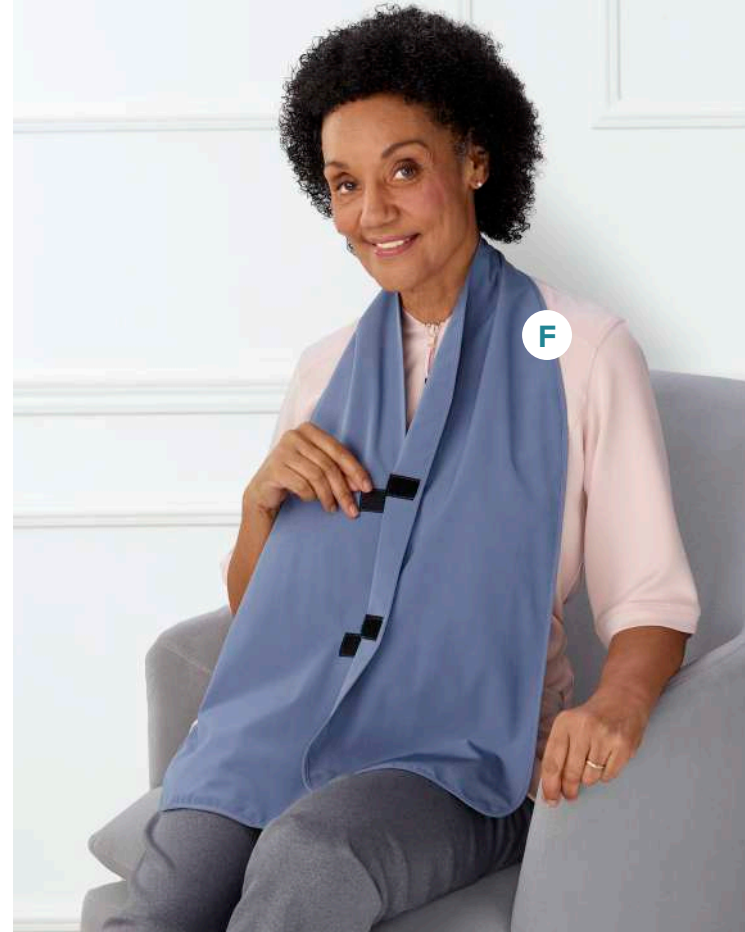
-Bonnie P.

Protective Bib-Scarf

Life can get messy and this easy-to-wash layer takes it on with style—and grace—while doubling as a lightweight scarf too.

- F. Steel Blue
- G. Navy

One Size
Item #505
USD \$19.98
CAD \$24.98



**Wheelchair/
Walker Utility Bags**

All your daily essentials will fit into this bag. It's built to last and designed with a hidden magnetic closure that secures with just the touch of your hand, plus grip pulls, secure easy touch straps and convenient zippered pockets.

Black
One Size
Item #530
USD \$34.98
CAD \$39.98



Recovery

The right recovery clothing is key to post-operative care. Whether it's the daily dressing routine, frequent bandage changes or wound care maintenance, the right recovery wear helps post-surgical patients minimize risk of injury and discomfort.



A. Women's Post-Surgical Puffer Scarf with Travel Pouch

One Size
Item #506
USD \$34.98
CAD \$39.98

B. Women's Adaptive Post-Surgical Top With Snaps

S-3XL
Item #61000
USD \$54.98
CAD \$59.98

C. Women's Tearaway Post-Surgery Recovery Pant

S-3XL
Item #61010
USD \$54.98
CAD \$59.98

D. Unisex Post-Surgery Recovery Jacket

S-3XL
Item #603
USD \$44.98
CAD \$49.98

E. Men's Adaptive Tearaway Pant

S-3XL
Item #41300
USD \$64.98
CAD \$69.98

Open Side
Tearaway style pants allow access to injuries along the leg and hip without fully undressing.

Open Sleeve
Sleeve opens all the way to easily access shoulder injuries and prevent strain.

We've got you covered

A
Alzheimer's

Dress and stay dressed with ease. We offer specialized options to help loved ones dress with ease, with easy-touch closures and smart zippers to prevent disrobing.



A. Women's Open-Back Half Zip Track Suit Top
S-3XL
Item #24810
USD \$59.98
CAD \$64.98

B. Women's Open-Back Track Suit Pant
S-3XL
Item #24920
USD \$46.98
CAD \$52.98

C. Women's Extra-Wide Easy Closure Slippers
6-12
Item #15100
USD \$54.98
CAD \$59.98

D. Men's Stay Dressed Long-Sleeve Jumpsuit
S-3XL
Item #51230
USD \$69.98
CAD \$74.98

E. Men's Extra Extra-Wide Slipper
7-14
Item #55105
USD \$54.98
CAD \$59.98

Find Your Size

We are here to help. Chat with our experts at 1-800-387-7088 (Monday to Friday, 9 am to 7 pm and Saturdays 10 am to 3 pm) or email us at customer@silverts.com.

All sizes are measured in inches

Women's Size Chart

	Bust	Waist	Hips
XS	33 - 34	24 - 26	35 - 36
S	35 - 36	27 - 29	37 - 38
M	37 - 39	30 - 32	39 - 41
L	40 - 43	33 - 35	42 - 45
XL	44 - 47	36 - 38	46 - 49
2XL	48 - 51	39 - 41	50 - 53
3XL	52 - 55	42 - 44	54 - 57

Regular pant inseam: 31"
Petite pant inseam: 28.5"

Men's Size Chart

	Chest	Waist	Hips
XS	33 - 35	25 - 27	33 - 35
S	36 - 38	28 - 30	36 - 38
M	39 - 41	31 - 33	39 - 41
L	42 - 45	34 - 37	42 - 45
XL	46 - 49	38 - 41	46 - 49
2XL	50 - 53	42 - 45	50 - 53
3XL	54 - 57	46 - 49	54 - 57

Regular pant inseam: 32"

Bra Size Chart

	Under Bust
S	26 - 31
M	32 - 35
L	36 - 39
XL	40 - 43
2XL	44 - 45
3XL	46-47

Fits cups A-D

Sneaker/Shoe Size Chart

Size		Length		Width		Ball Circumference	
W'S	M'S	CM	Inch	CM	Inch	CM	Inch
5	3 1/2	22.8	9.0	8.0	3.1	22.8	9.0
5 1/2	4	23.2	9.1	8.1	3.2	23.1	9.1
6	4 1/2	23.7	9.3	8.2	3.2	23.4	9.2
6 1/2	5	24.1	9.5	8.3	3.3	23.7	9.3
7	5 1/2	24.5	9.6	8.4	3.3	24.1	9.5
7 1/2	6	24.9	9.8	8.5	3.3	24.4	9.6
8	6 1/2	25.3	10.0	8.6	3.4	24.7	9.7
8 1/2	7	25.8	10.1	8.7	3.4	25.0	9.8
9	7 1/2	26.2	10.3	8.8	3.5	25.3	10.0
9 1/2	8	26.6	10.5	8.9	3.5	25.6	10.1
10	8 1/2	27.0	10.6	9.0	3.6	26.0	10.2
10 1/2	9	27.5	10.8	9.1	3.6	26.3	10.3
11	9 1/2	27.9	11.0	9.2	3.6	26.6	10.5
11 1/2	10	28.3	11.1	9.4	3.7	26.9	10.6
12	10 1/2	28.7	11.3	9.5	3.7	27.2	10.7
12 1/2	11	29.2	11.5	9.6	3.8	27.5	10.8
13	11 1/2	29.6	11.6	9.7	3.8	27.9	11.0
13 1/2	12	30.0	11.8	9.8	3.8	28.2	11.1
14	12 1/2	30.4	12.0	9.9	3.9	28.5	11.2
14 1/2	13	30.8	12.1	10.0	3.9	28.8	11.3
15	13 1/2	31.3	12.3	10.1	4.0	29.1	11.5
15 1/2	14	31.7	12.5	10.2	4.0	29.4	11.6

Keep in mind many of our bra/shoe styles vary slightly in sizing, so it is best to review the product's specific size chart. This can be found at silverts.com on the product's page, just below where you click to choose your size.

Shoe Sizes 101

Here's how to find your adaptive-footwear size

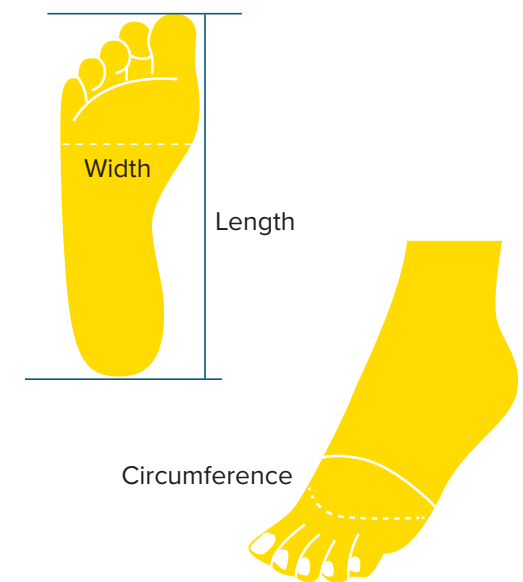


Adaptive footwear is easy-on, easy-off, making it perfect for caregivers and people with mobility or manual dexterity challenges. Our shoes also adjust to accommodate swelling or orthotics, to ensure all-day comfort.

A good fit is key to making the most of these design features. Here's how to find your adaptive-footwear size.

1. Measure the length, width and circumference of your feet.
2. Find your adaptive-footwear size by comparing the measurements of your larger foot to our Shoe Size Chart.
3. Or, when browsing online, select a shoe, then click on "Size Chart" for a simplified chart that shows sizing for that product.

Visit silverts.com/size-chart for step-by-step instructions.



Slipper Size Chart

Size		Length		Width		Ball Circumference	
W'S	M'S	CM	Inch	CM	Inch	CM	Inch
6	N/A	24.1	9.5	8.1	3.2	23.5	9.3
7	N/A	24.9	9.8	8.3	3.3	24.1	9.5
8	N/A	25.8	10.2	8.5	3.4	24.8	9.8
9	7	26.6	10.5	8.7	3.4	25.4	10
10	8	27.5	10.8	8.9	3.5	26	10.3
11	9	28.3	11.2	9.2	3.6	26.7	10.5
12	10	29.2	11.5	9.4	3.7	27.3	10.8
N/A	11	30	11.8	9.6	3.8	27.9	11
N/A	12	30.9	12.2	9.8	3.9	28.6	11.3
N/A	13	31.7	12.5	10	3.9	29.2	11.5
N/A	14	32.6	12.8	10.2	4	29.9	11.8

Step into Summer

For Him

For Her

Experience all the comfort, adjustability, and breathability of our best-selling women's sandals – now available for men too!

Left to right: #55180, #15180, #15370



90+ years of business & celebrating 20+ years of online excellence.

Have a question? Call or email anytime.
1-800-387-7088 | customer@silverts.com

silverts.com



Printed in Canada | March 2024